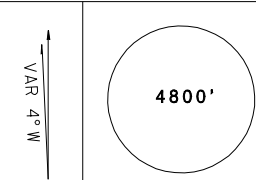
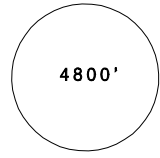
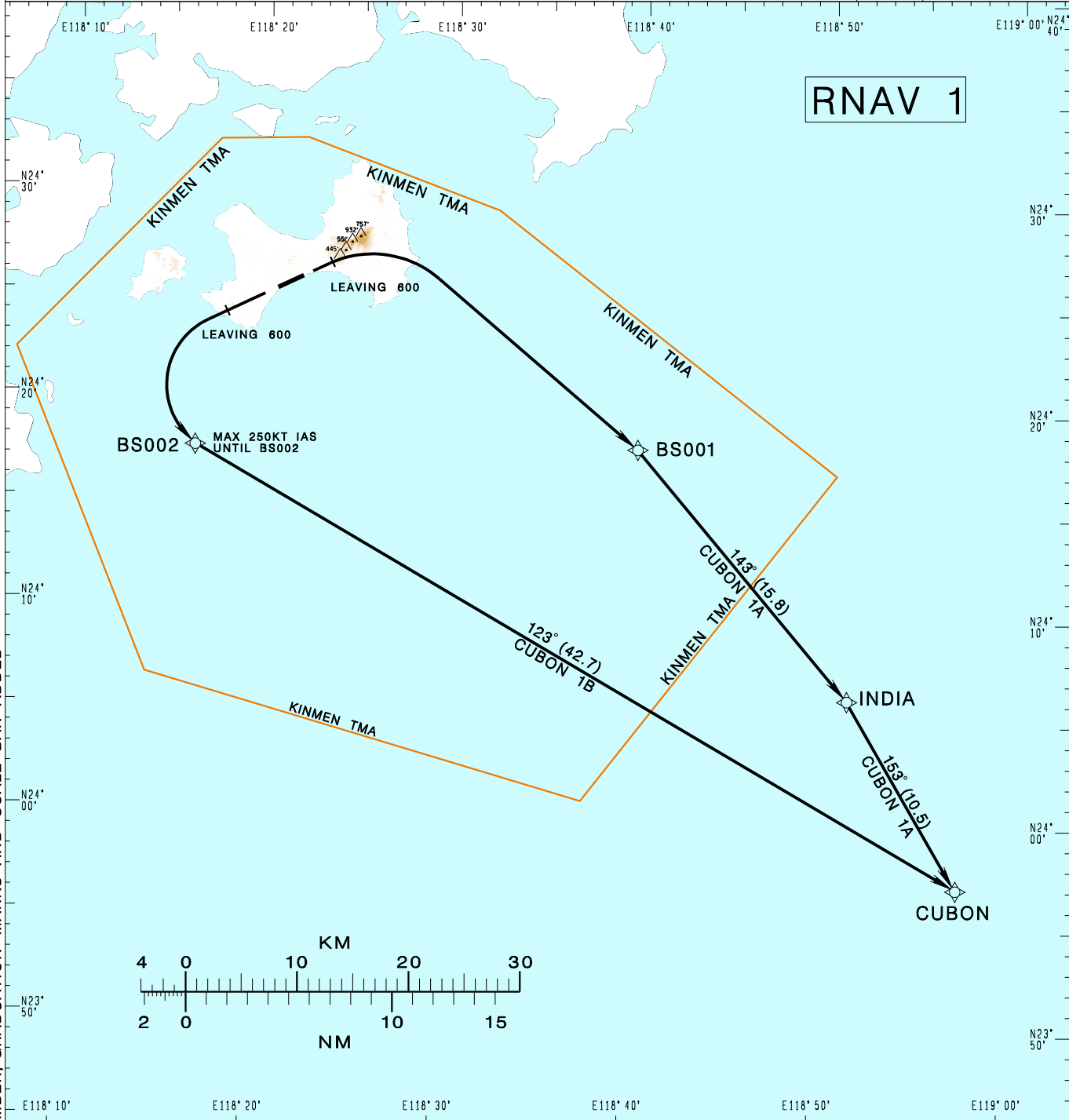


**金門/尚義機場**  
KINMENSHANGYI AD

RCBS SID  
CUBON 1A RNAV (RWY06)  
CUBON 1B RNAV (RWY24)

KAOSIUNG APP 124.6 133.1	KINMEN TWR 118.0 126.2	ATIS 127.2	  MSA ARP 25NM	
Apt Elev: 56'		Trans Level: FL130		Trans Alt: 11,000'
BEARINGS ARE MAGNETIC; DISTANCES ARE NAUTICAL MILES; ELEVATIONS, HEIGHTS IN FEET				



CHANGES: NEW PAGE NUMBER, GRADUATION MARKS AND SCALE BAR ADDED

**CUBON ONE ALFA RNAV DEPARTURE**  
Depart RWY HDG until leaving 600ft, turn right direct to BS001, INDIA, CUBON.

**CUBON ONE BRAVO RNAV DEPARTURE**  
Depart RWY HDG until leaving 600ft, turn left direct to BS002, CUBON.

- NOTE**
- 1.CUBON 1A minimum climb gradient: 6.8% (414ft/NM) until 2000ft.
  - 2.CUBON 1B speed restriction: Max 250KT IAS until BS002.
  - 3.Critical DME & DME gap not surveyed.
  - 4.ATS surveillance required.